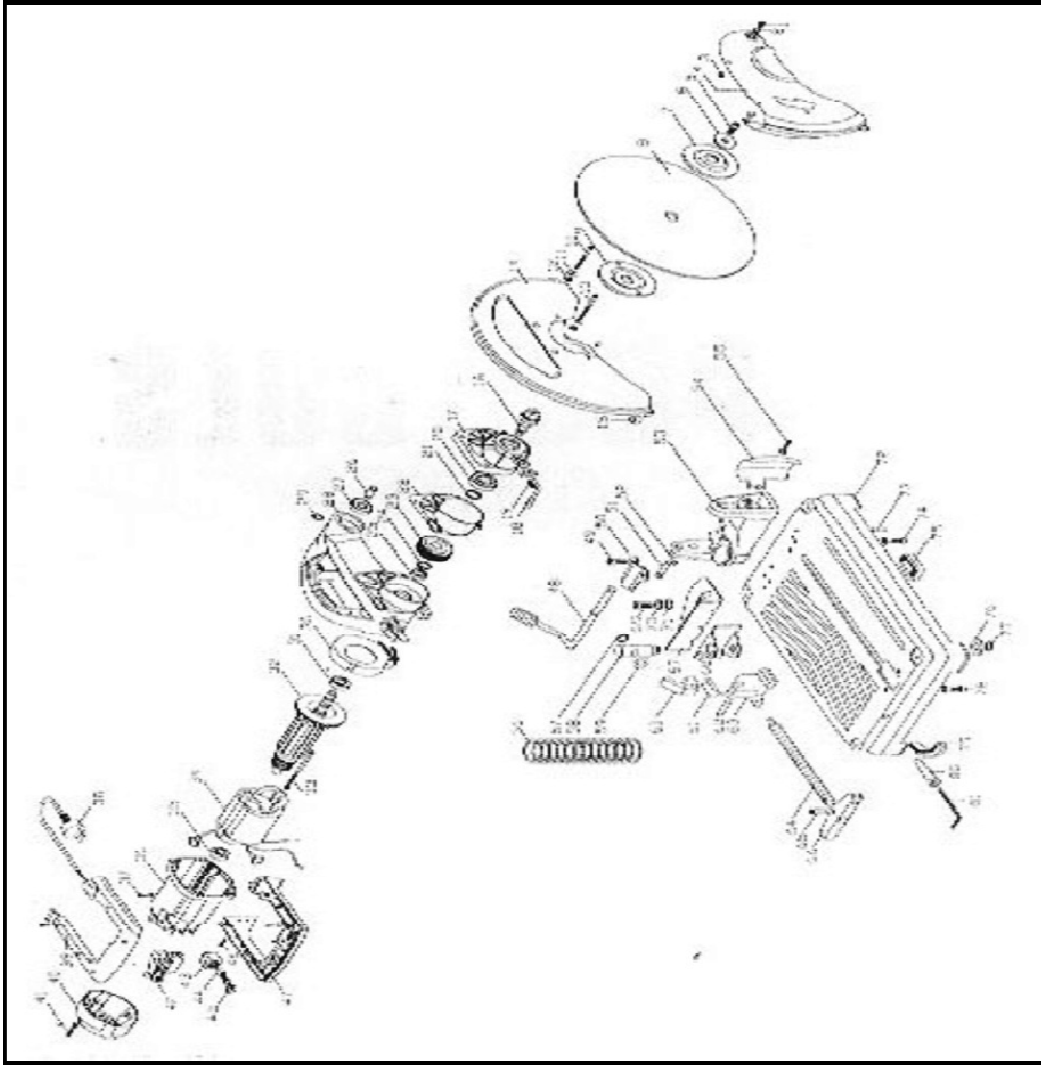


**POWER TOOLS**

**PRO 1355 A - CUT OFF MACHINE**

Packing	Power	Specifications	Mode
1	2200 W	355 MM	COLOR BOX



## PRO 1355 A- CUT OFF MACHINE

<b>NO.</b>	<b>Name of Spare parts</b>
2	WASHER
3	RUBBER PIN
4	MOVING GUARD
5	INNER HEXAGON SCREW
6	WASHER
7	OUTER NUT
8	SANDER WHEEL
9	INNER NUT
10	SCREW M5 X30
11	SPRING WASHER
12	PLANE WASHER
13	SCREW M5 X30
14	FIXED GUARD
15	RUBBER COVER
16	SPINDLE
17	MIDDLE COVER
18	STOP PIN
19	STOP SPRING
20	BEARING 6005Z
21	WASHER
22	PAPER WASHER
23	GEAR
24	SPINDLE WASHER
25	BEARING 6001Z
26	CONNECTING PIN
27	BEARING 6001Z
28	TOP HANDLE BRACKET
29	SPINDLE WASHER
30	WIND WASHER
31	BEARING 6202Z
32	ARMATURE
33	SCREW M5X45
34	STATOR
35	BEARING 6000Z
36	HOUSING
37	SCREW ST4X14
38	CABLE AND PLUG
39	HANDLE PART
40	TAIL COVER
41	SCREW ST4X14
42	SWITCH
43	BRUSH HOLDER
44	CARBON BRUSH

<b>NO.</b>	<b>Name of Spare parts</b>
45	BRUSH COVER
46	SCREW
47	HANDLE PART
48	WRENCH
49	INNER HEXAGON SCREW M8X25
50	FIX PLATE
51	STOP PIN
52	RUBBER PIN
53	BRACKET BASE
54	SPARKEL BAFFLE
55	SCREW M6X12
56	REPLACEMENT SPRING
57	SPINDLE WASHER
58	WRENCH
59	WASHER
60	INSTANT NUT
61	SPLINT
62	CYLINDER PIN 10X35
63	THREAD BASE
64	THREAD STICK
65	FLEXIBLE PIN
66	THREAD STICK WRENCH
67	FLX PINCERS PART
68	MOVABLE PINCERS PART
69	INNER HEXAGON SCREW 8X25
70	FLEXIBLE WASHER
71	PLANE WASHER
72	BASE PLATE
73	FLEXIBLE PIN
74	INNER HEXAGON SCREW M10X25
75	FIX PART
76	WASHER
77	WASHER
78	INNER HEXAGON SCREW M8X20
79	RUBBER FEET
80	WRENCH JACKET
81	INNER HEXAGON WRENCH